

High Class 3 inch Kiosk Printer

SK5-31**COMING SOON**
 **SANEI** SANEI ELECTRIC INC.

- Presenter unit incorporated
- Anti paper jam function (**patent pending**)
- Paper eject assistance function (**patent pending**)
- 250 mm/sec print speed
- Max. 150mm large paper roll support
- Ethernet model available
- Multi position paper roll installation support (12 positions)
- Adjustable paper guide (2 – 3 inch)



* LED Bezel (Option)



Please visit Sanei
YouTube channel to
check more details!

I D E A L A P P L I C A T I O N S**PARKING**

Paper jam free function and the large paper holder achieve 24/7 non-stoppable operation

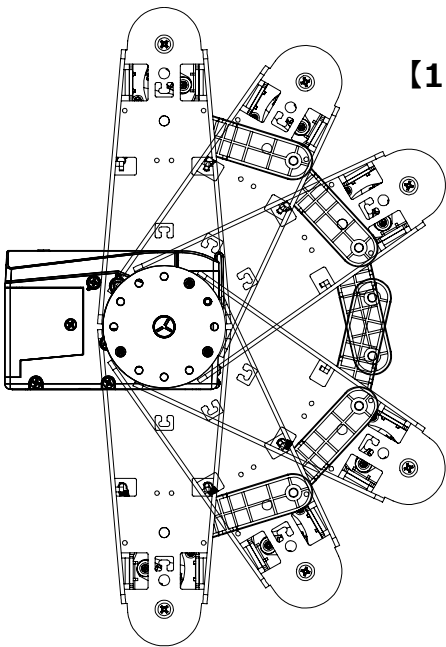
SELF-PAYMENT

Receipts or coupons can be retracted if not taken to keep clean around the terminal

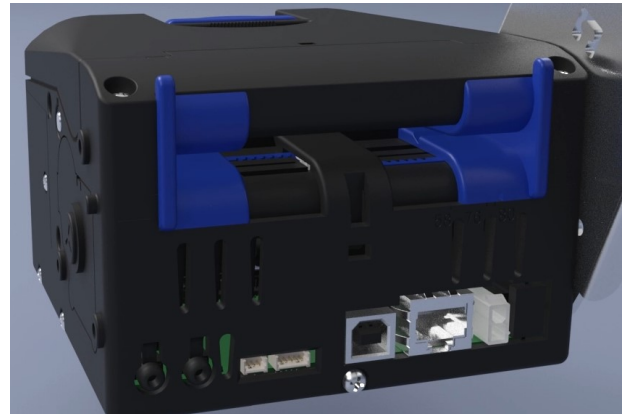
LOTTERY & GAMING

Retract function can protect the valuable coupons in case the coupons are not picked up by the customers.

[12 paper holder positions available]



[Adjustable paper guide]



GENERAL SPECIFICATIONS

SK5-31

Printing Method	Direct Thermal
Resolution	203dpi (8dot/mm)
Print Speed	Max.250 mm/sec
Paper Width	54 – 82.5mm
Paper Thickness	59 to 150um (52g/m2 to 128g/m2)
Paper Roll Diameter	Max 150mm (254mm with option)
Paper Holder	Single arm (Left / Right, 12 positions support)
Auto Paper Cutter	Incorporated (Full cut only)
Interface	USB 2.0 and RS-232C LAN and RS-232C
Presenter	Incorporated Clump mode (bottom loop only) / Retract mode / Continuous mode Ejecting speed : 600mm/sec Ticket length : 60 to 250mm
Command	ESC/POS *1
Driver and SDK	Windows / Linux CUPS / Android Windows SDK / Unix SDK / Android SDK
Sensors	Near end Sensor/ Paper end Sensor/ BM (Black mark) Sensor Presenter Sensor
Reliability	Thermal Head Life : 150KM Auto Paper Cutter Life : 2.0M cuts
Barcode	UPC-A/E, JAN13/8, CODE39, ITF, CODABAR, CODE128, GS1 Databar Omni-directional, Truncated, Limited, Stacked, Stacked Omni-directional
Regulation	VCCI, FCC, CE CLASS A, UL
Power Supply	DC Power supply DC 24V±5% / TYP 2.7A
Dimensions (Excl. paper roll)	116(W) 143.5(L) x 76.4(H) mm

*1 ESC/POS is a registered trade mark of Seiko Epson Corporation

Please contact

Sanei Electric Inc.

2-51-13 Ikebukuro, Toshima-ku, Tokyo 171-0014, Japan

URL : <https://www.sanei-elec.co.jp/en/>

E-Mail : inquiry_sanei@sanei-elec.co.jp

